

Gas Springs & Heavy Duty Lift System

Tilt up / Lower turn Cabinet Door System and Other Fittings

Made of imported cold-rolled steel and high density zinc alloy, with finish by superior electrophoresis and painting technique, and excellent hydraulic by advanced vacuumizing technique. Harmless, eco-friendly, silent.



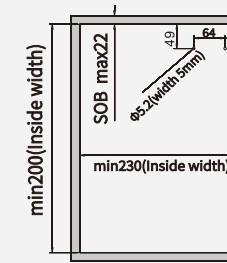
SINCE
1981

KG123

Freely Stop Lifting Gas Support

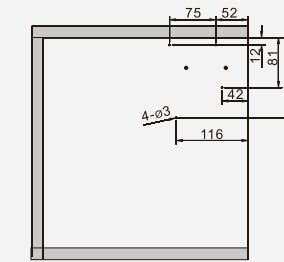
- 1.The lift system is suitable for wall cabinets and tall cabinets with low height
- 2.With soft closing under angle 25°, max opening angle is 100°
- 3.No need hinges for cabinet
- 4.Easy to open, free stop function
- 5.Force of opening or closing is adjustable
- 6.Easy assembly and adjustment
- 7.Different color options for decoration cover

Hole Position And Needed Space



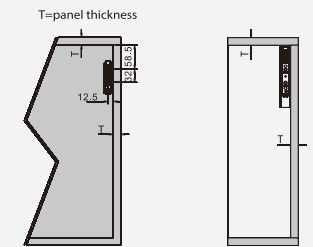
SOB panel thickness

Fixed Position



4 pcs x woodworking screws $\varnothing 4 \times 35 \text{mm}$

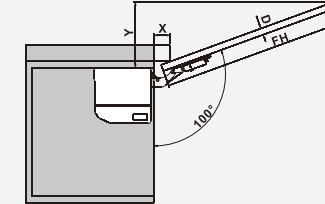
Panel Installation Size



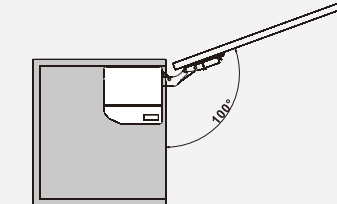
4 pcs x woodworking screws ($\varnothing 4 \times 16 \text{mm}$) Use for fixing the aluminum panel
 $58.5 + T = \text{Total length}$ $12.5 + T = \text{Total length}$

Space Requirement

Situation 1

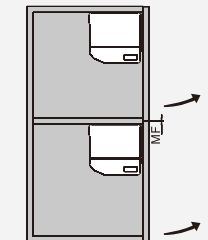


Situation 2



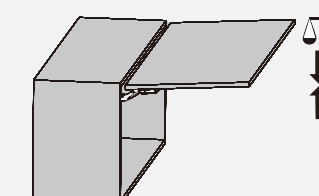
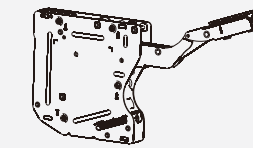
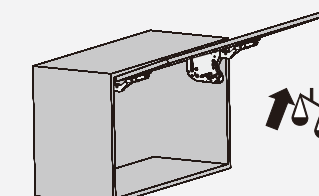
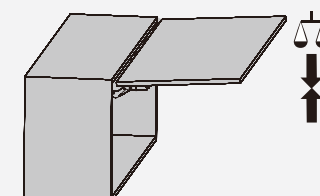
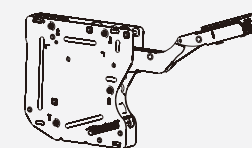
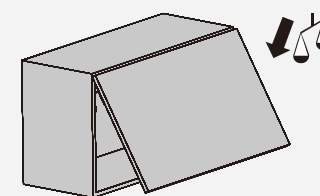
D (mm)	16	18	22	26	28
X (mm)	43	39	30	18	12
Y (mm)	$Y = FH \times 0.31 - 15 + D$				

Minimum Door Gap

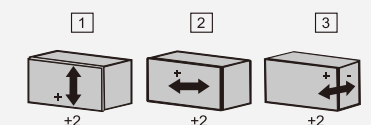
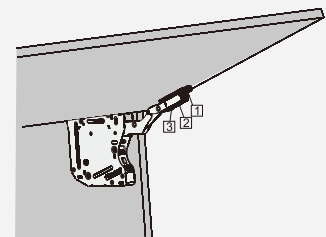
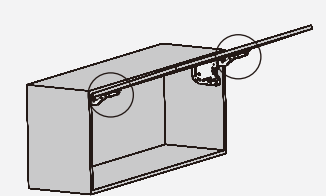


MF is 2 mm at opening

Hovering Adjustment



3D Adjustment of Pane

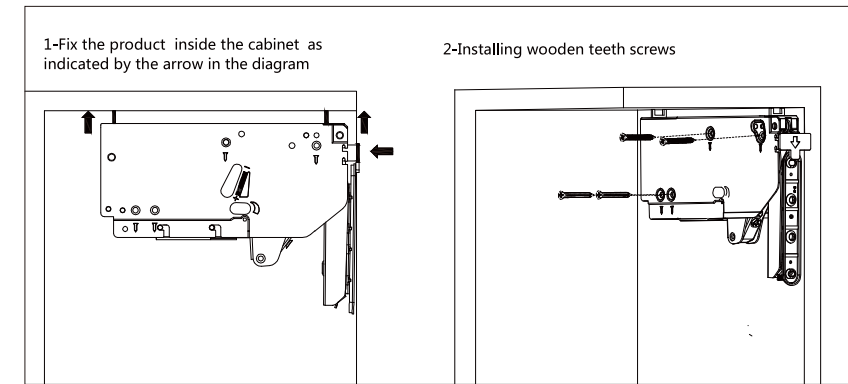


HM07

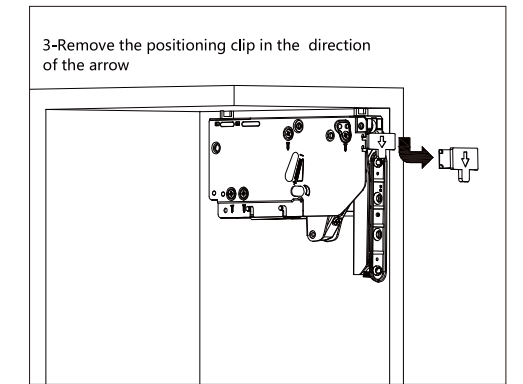
Up Turning Soft Close Gas Support

05 | kav

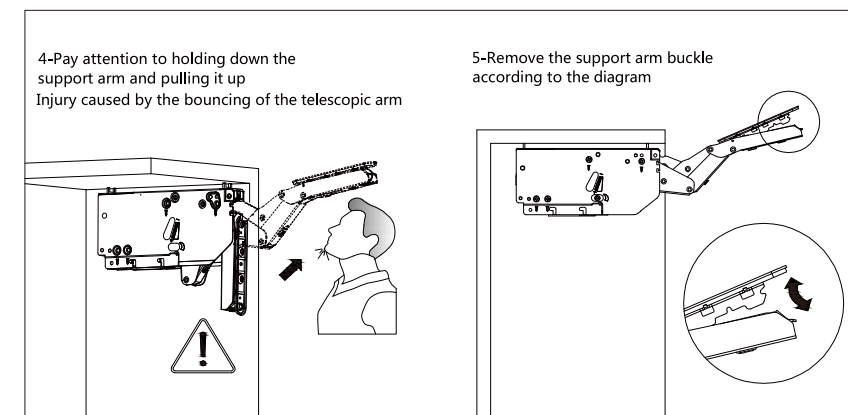
Cabinet Installation Positioning



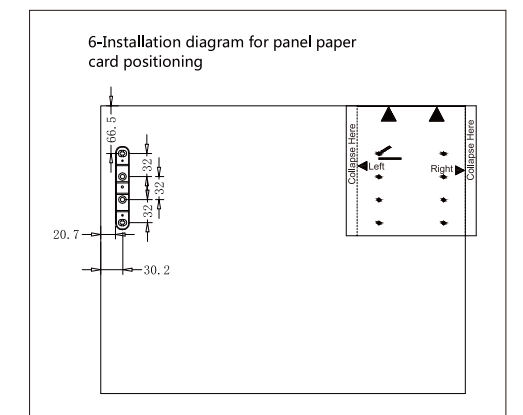
Positioning Buckle



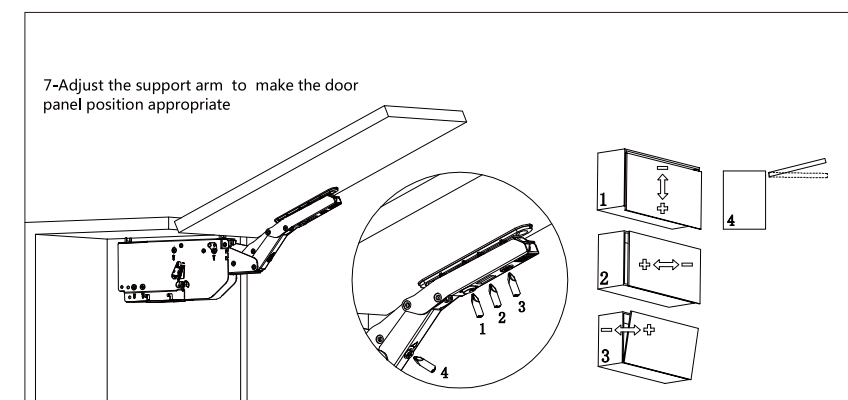
Safety Instructions



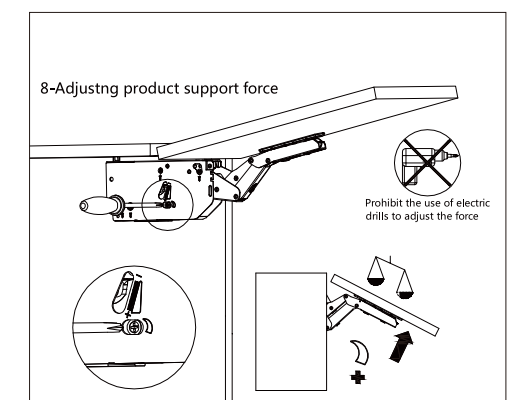
Paper Card Positioning (mm)



Door Panel Adjustment



Product Force Adjustment



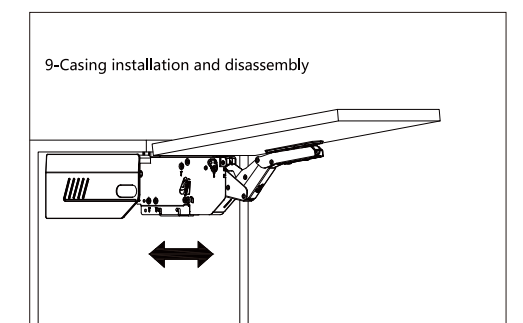
Door Panel Adjustment

Model	(mm) Panel height corresponds to beaming weight							
	400	450	500	550	600	650	700	800
Medium sized	5.0kg ~9.2kg	4.3kg ~8.5kg	3.8kg ~8.0kg	3.2kg ~7.5kg	2.8kg ~7.0kg	2.4kg ~6.4kg		
Heavy				6.1kg ~12.5kg	5.5kg ~11.8kg	5.0kg ~11.1kg	4.5kg ~10.6kg	3.5kg ~9.0kg

When installing 3 products, the product load-bearing capacity is increased by 50% according to the chart.

Attention: Choose the model for installation based on the height and weight of the panel
 Light duty only suitable for panel height of 400-650mm weight comparison chart on the left
 Light duty only suitable for panel height of 550-800mm weight comparison chart on the left

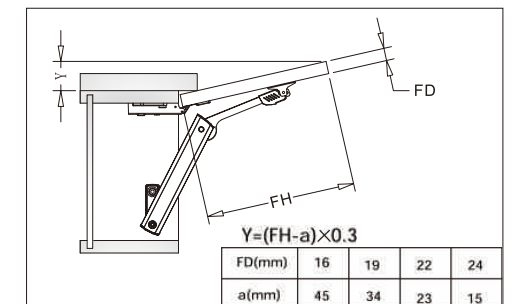
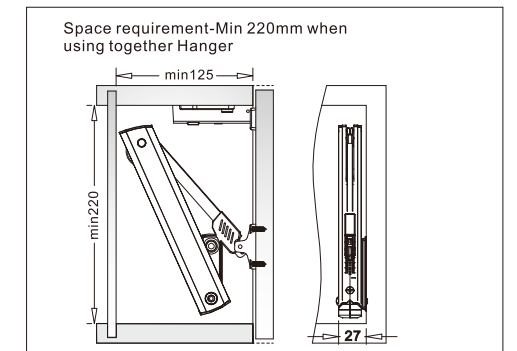
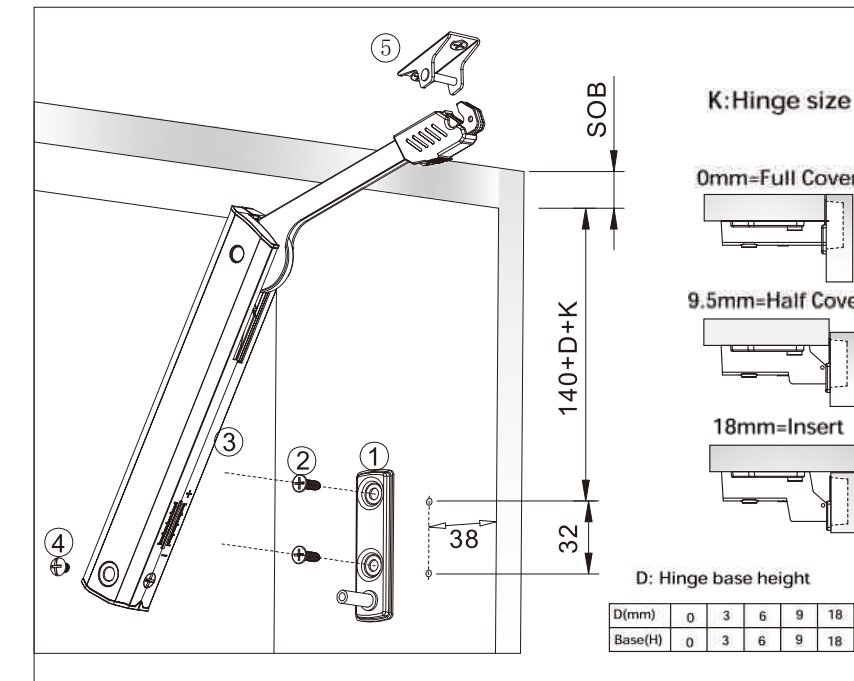
Installing The Casing



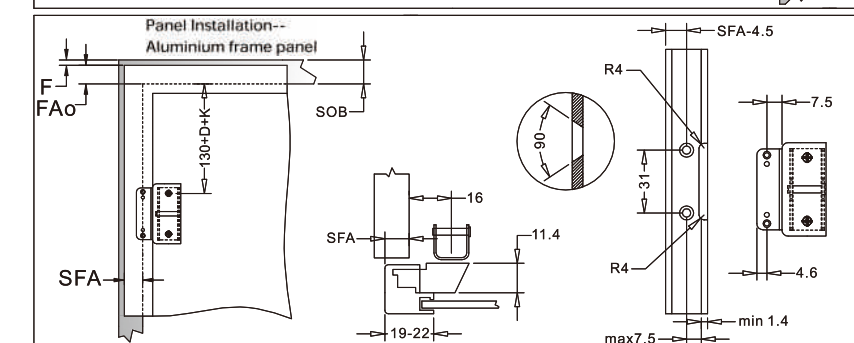
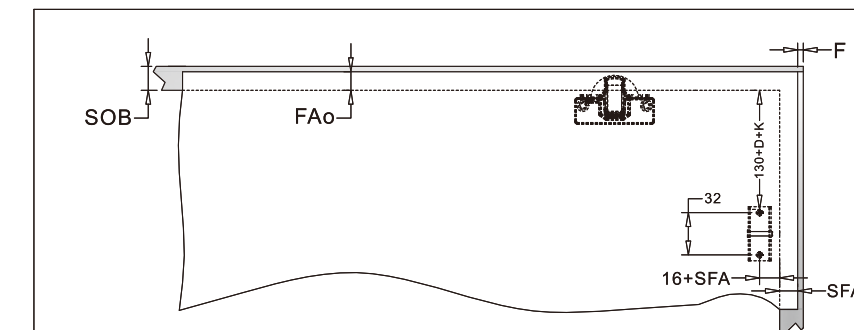
HM08

Up Turning Free Stop Lift System

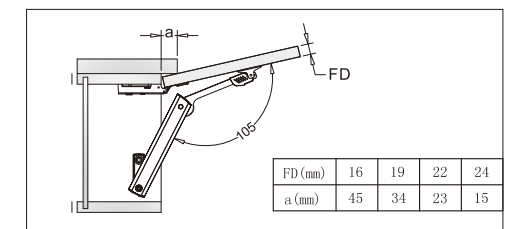
Cabinet Installation And Positioning Dimensions(mm)



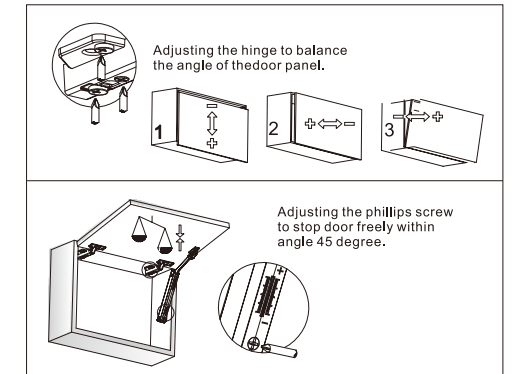
Panel Installation And Positioning Dimensions(mm)



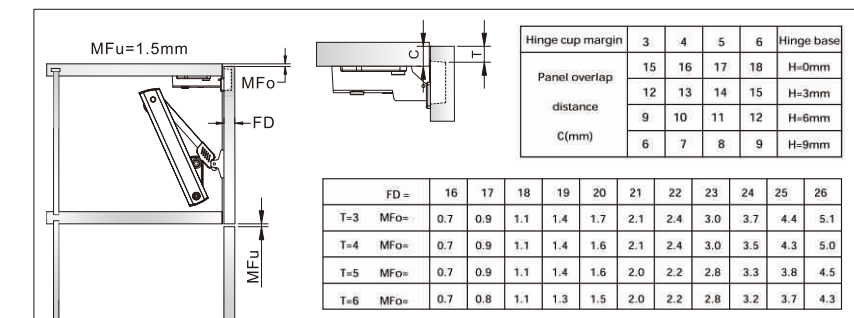
Installation Size(mm)



Adjusting The Force And Balance



Hinge Installation(mm)



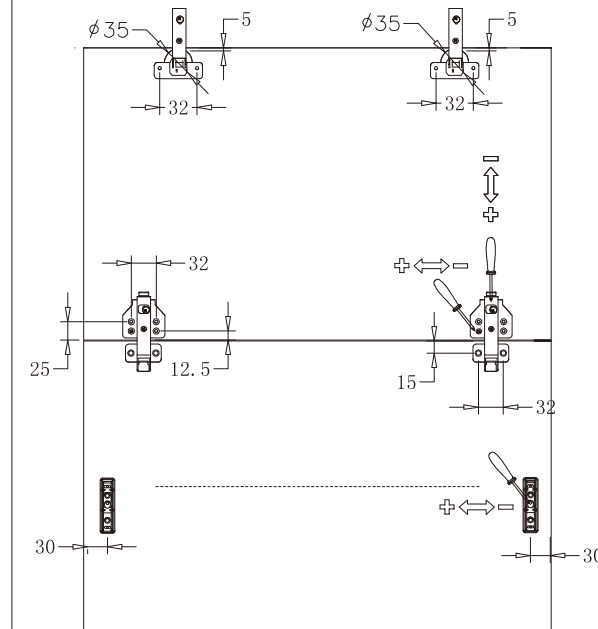
F:Door Gap
D:Hinge base height
K:Hinge size
FH:Door panel height
FD:Door panel thickness
SOB:cabinet panel thickness
FAo:Top plate size
MFo :Top min door gap
MFu :Down min door gap
SFA:Side Panel size=
panel thickness-door gap

HM09

Freely Stop Folding Door Support

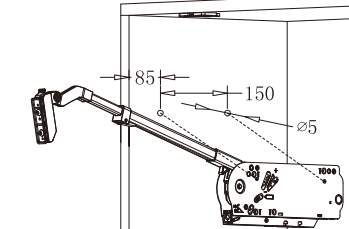
Cabinet Installation Positioning Size ()

Panel hinge hole size (mm)

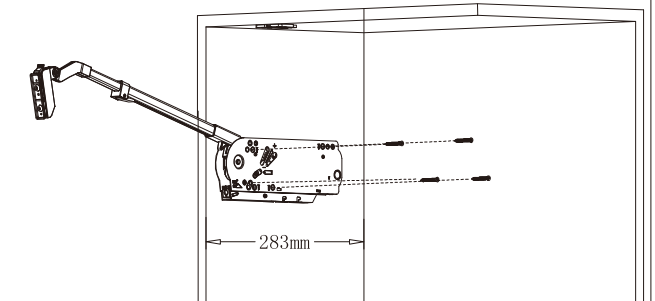


Paper cards are only suitable for 18mm thick door panels.
Panel height range ; 600~1020

Cabinet positioning (mm)



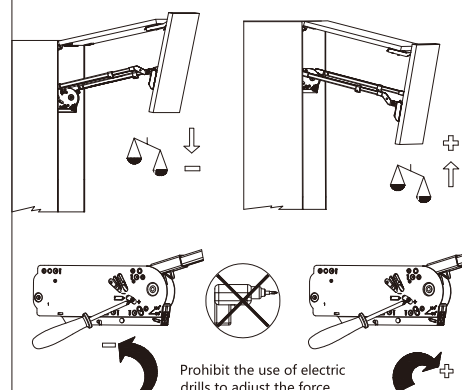
Cabinet installation



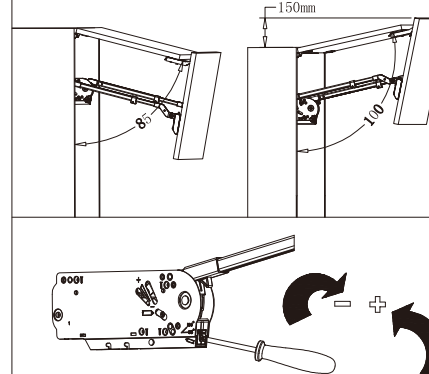
The net depth of the cabinet shall be more than 283mm
Cabinet width range ; 600~1800

The force is adjusted with the angle of the slab

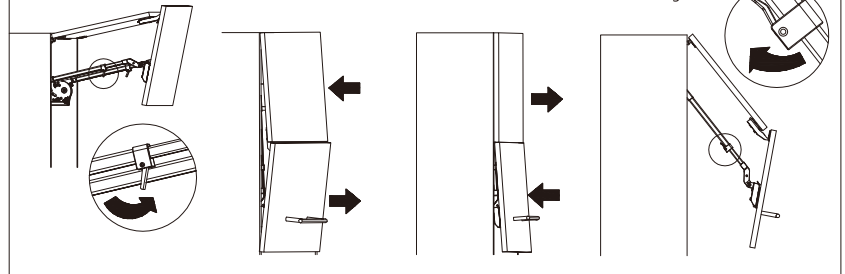
Force adjustment



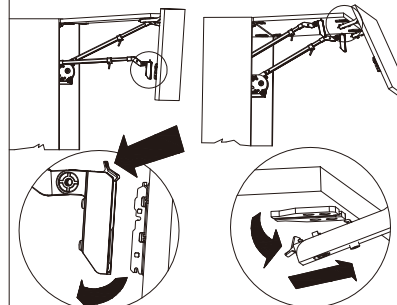
Panel angle adjustment



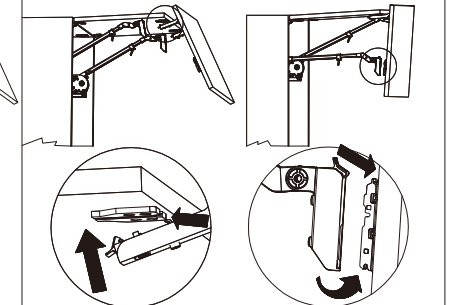
Telescopic arm adjustment



Schematic diagram of hinge removal



Schematic diagram of hinge installation



Model	Panel height corresponds to bearing weight (mm)							
	600	650	700	750	800	850	900	1000
Light duty	5.7~9.8kg	5.5~9.3kg	5.0~8.8kg	4.5~8.3kg	4.0~7.8kg			
Medium sized	7.7~11.5kg	7.2~11.0kg	6.7~10.5kg	6.2~10.0kg	5.8~9.5kg			
Heavy				7.2~11.5kg	7.0~11.0kg	6.5~10.5kg	6.0~10.0kg	5.5~9.1kg
Heavy Weight				10.5~17.0kg	9.5~16.0kg	9.1~15.0kg	8.8~14.6kg	8.5~14.0kg

SM201H-P

Soft Close Up Turning Gas Support

Material: Steel+Plastic
 Finish: Painting
 Capacity Range: 50N-150N
 Available: Up-turning wooden door and aluminum-frame
 Advantages: 1.Force Adjustable, 2.Soft Closing



Parameter

Pip Diameter(mm)	Rod Diameter(mm)	Length(mm)	Hole Distance(mm)	Stroke(mm)	Standard Pressure(mm)
Φ 15	Φ 6	312	282	92	50-150N

Door Width(mm)

	450	600	900	1200
Door Height(mm)				
400	50Nx2	50Nx2	80Nx2	100Nx2
500	50Nx2	100Nx2	100Nx2	150Nx2
600	80Nx2	100Nx2	150Nx2	

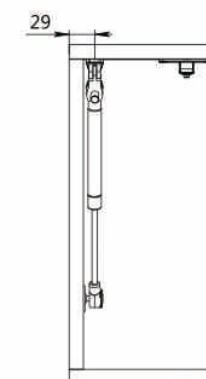
18mm MDF Proportion:0.728kg/10CBM

PS:

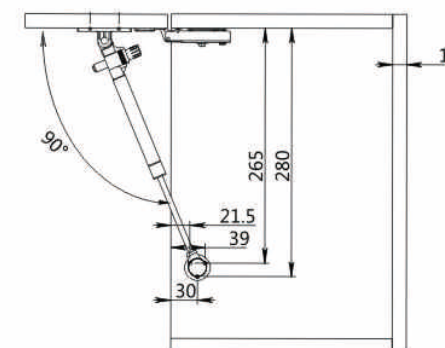
- 1.Please choose the suitable product quantity for working, according to the weight, height and width of door
- 2.Special customized pressure is acceptable, max capacity is 200N
3. Different gas spring pressure mates with different damper force

Installation

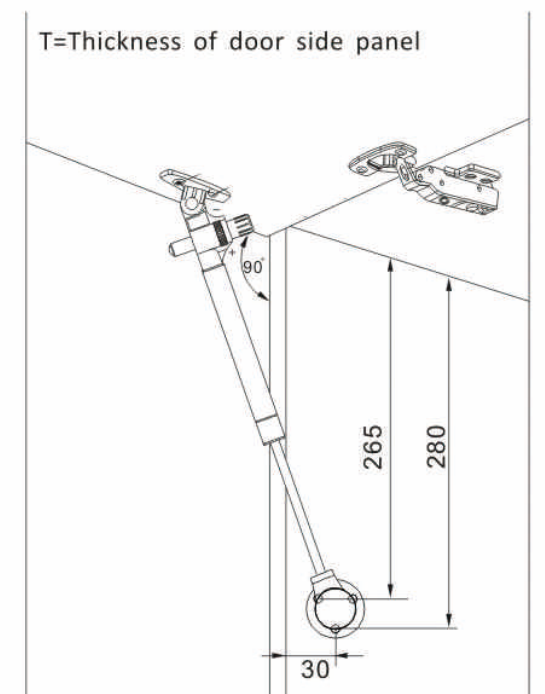
- A. Door fixed location:55mm
- B. Side panel fixed location:265mm
- C.Cabinet depth fixed location: 29mm



1. Front View



2. Side View



PM201-P / PN201-I

Up-Down Turning Gas Support

Pressure:50N-150N
Length:245mm
Finish: Hard chrome plating
Stroke:90mm
Main material:Plastic/iron/copper
Optional Function: Up/Down Turning Cabinet Lift,
Up/Down Turning Soft Close Cabinet Lift, Freely Stop,
free stop/double step close
Packing:100pcs/CTN

PM201-P/PN201-I Installation Guide

kav

Up Turning Gas Support
PM201-P



Down Turning Gas Support
PM201-P



Up Turning Gas Support
PM201-I



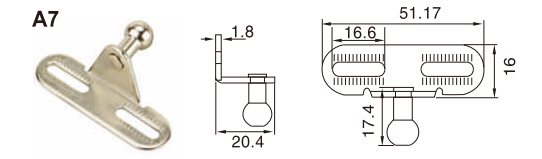
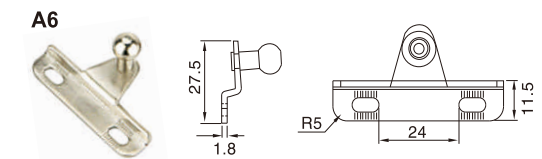
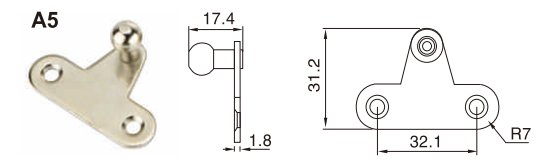
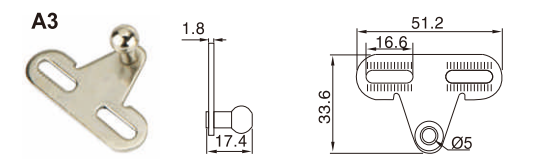
Down Turning Gas Support
PM201-I



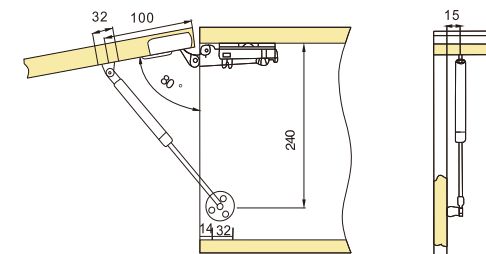
Fittings Available



Optional Accessories



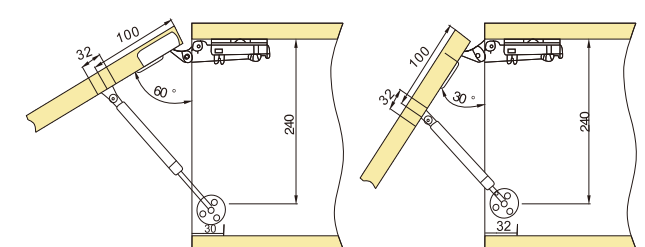
Uses Division



Usage: Pneumatic Up-turning Cabinet Support

Force Specification:50-120N

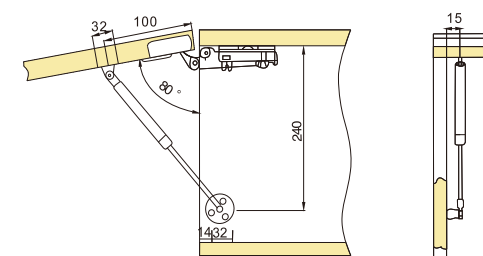
Application:kav gas spring support can make wooden/aluminum door with suitable weight turning upward slowly and steadily.



Usage: Pneumatic Up-turning Freely Stop Lift System

Force Specification:50-120N

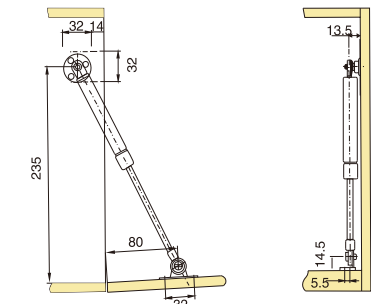
Application:It can make wooden door/aluminum frame with suitable weight stop freely in any position between 30 degree to 90 degree.



Usage: Hydraulic Up-turning Flip Support

Force Specification:50-120N

Application:It can make wooden door/aluminum frame with suitable weight turning upward steadily and slowly with soft close function between 30 degree to 90 degree.



Usage: Hydraulic Down-turning Flip Support

Force Specification:50-120N

Application:It can make wooden door/aluminum frame with suitable weight turning downward steadily and slowly.

PM02H-P

Pneumatic Flip Up Support



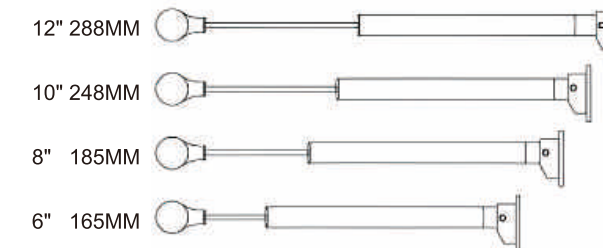
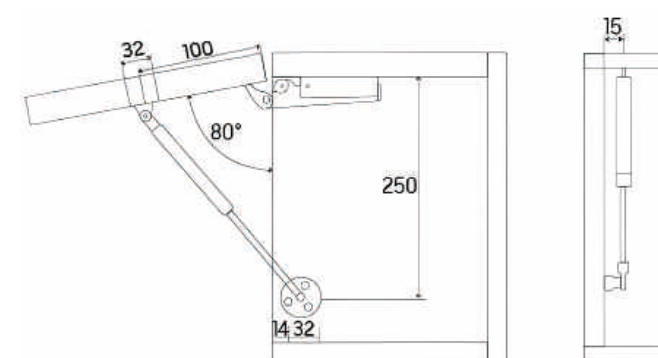
PM02-P Installation Guide

kav

Support Force: 40N-200N
 Travel: 90mm
 Surface Treatment of Pipes: Chrome Plating, Spray Painting
 Packaging Quantity: 100 Sets/Box
 Center Distance: 248mm
 Rod Surface Treatment: Chrome Plating
 Main Materials: Plastic, Iron, Copper
 Optional Functions: Upward Flip Door Support,
 Downward Flip Door Buffering
 Upward Flipping Door Can Stop At Will,
 And Upward Flipping Door Buffering



Installation Method



Selective Color



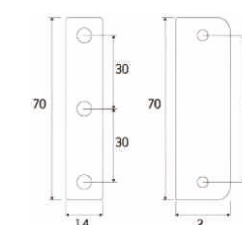
Customizable Color



Optional Accessories



Aluminum Door Hittings



BA03ZC-319U Soft Close Up Turning Gas Support

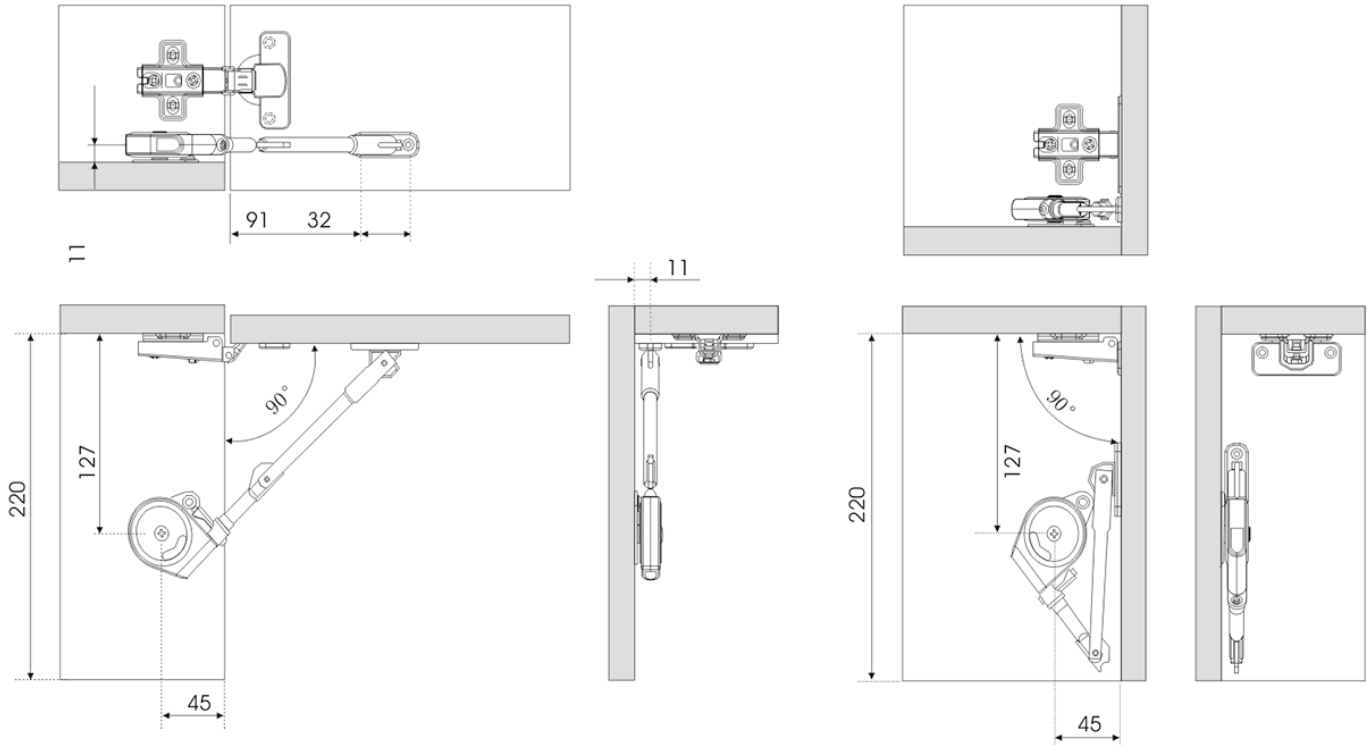


Features:
During the downward closing process, the door opens gently with no impact and no noise.
The product can be installed on either the left or right side.

Range:
Single product torque: 50~70kgf·cm
Door weight(m)/2 x Door weight x9.8=4.9~6.86N
(50~70 kgf·cm)



Installation Dimensions(mm)



BA03ZC-319SU Soft Close Up Turning Gas Support (Short rod)

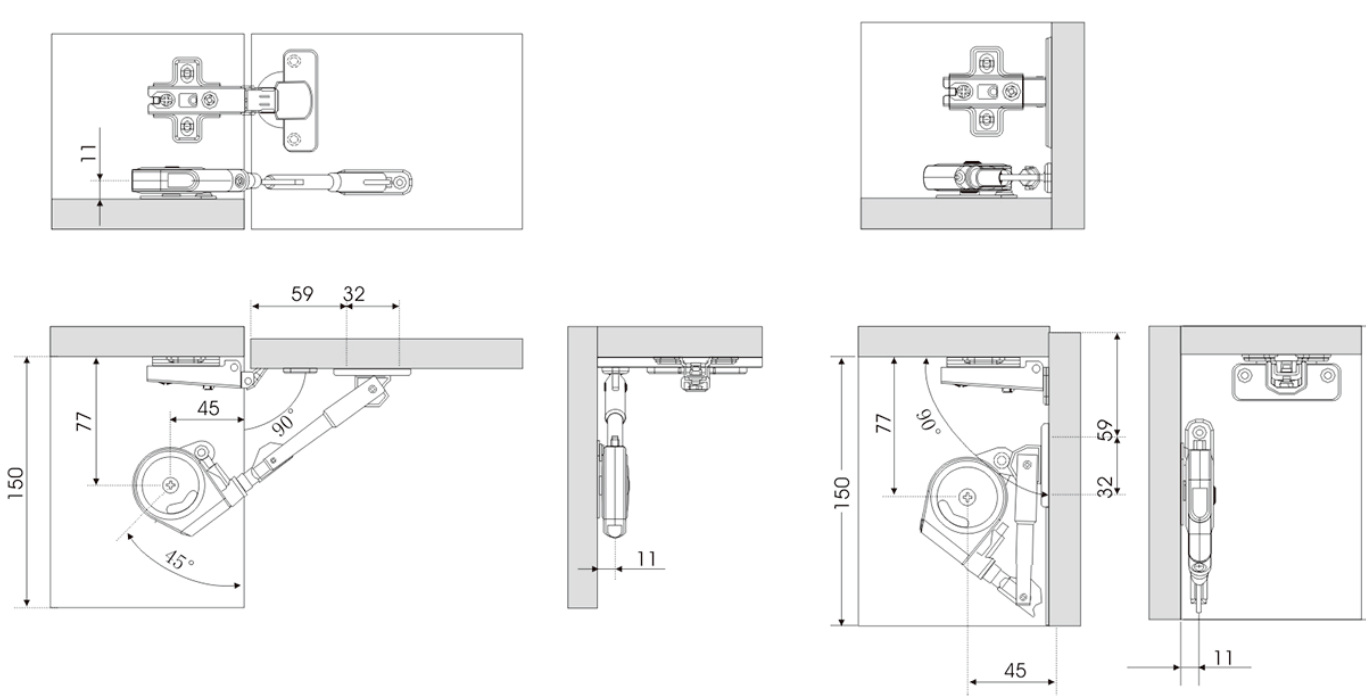


Features:
During the downward closing process, the door opens gently with no impact and no noise.
The product can be installed on either the left or right side.

Range:
Single product torque: 5~12kgf·cm
Door weight(m)/2 x Door weight x9.8=0.49~1.18N
(5~12 kgf·cm)



Installation Dimensions(mm)



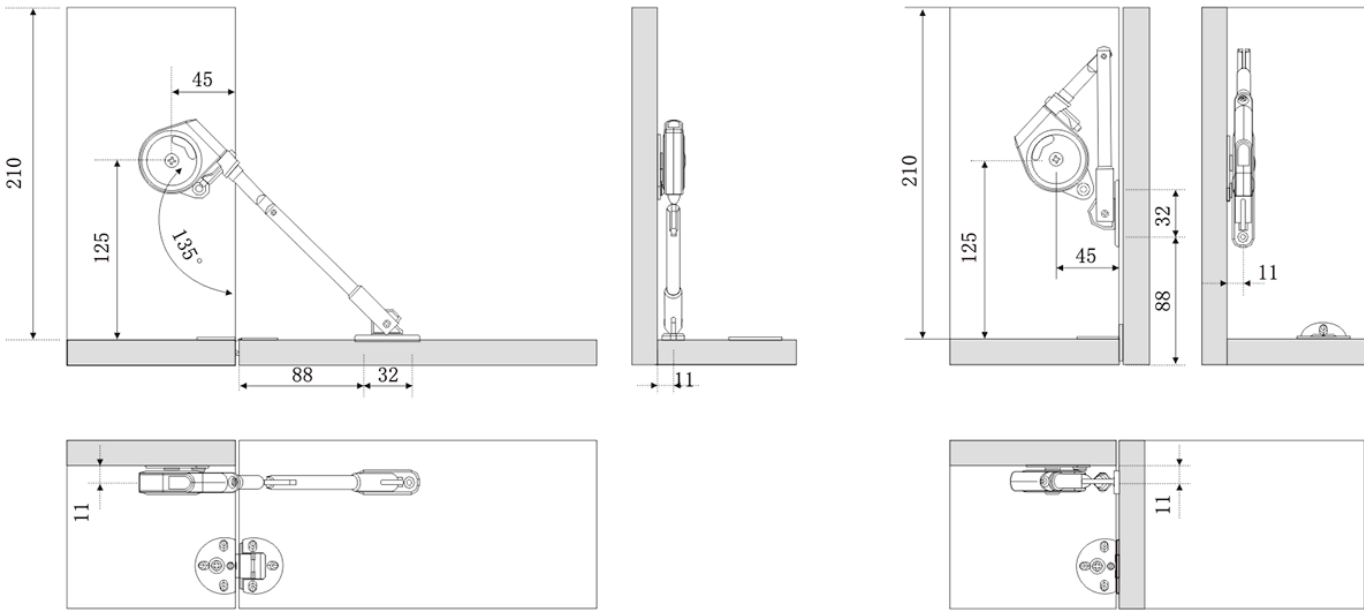


Features:
The door opens downward smoothly,
reducing impact and noise.
The product can be installed on
either the left or right side.

Range:
Single product torque: 50~70kgf·cm
Door weight(m)/2 x Door weight x9.8=4.9~6.86N
(50~70 kgf·cm)



Installation Dimensions(mm)

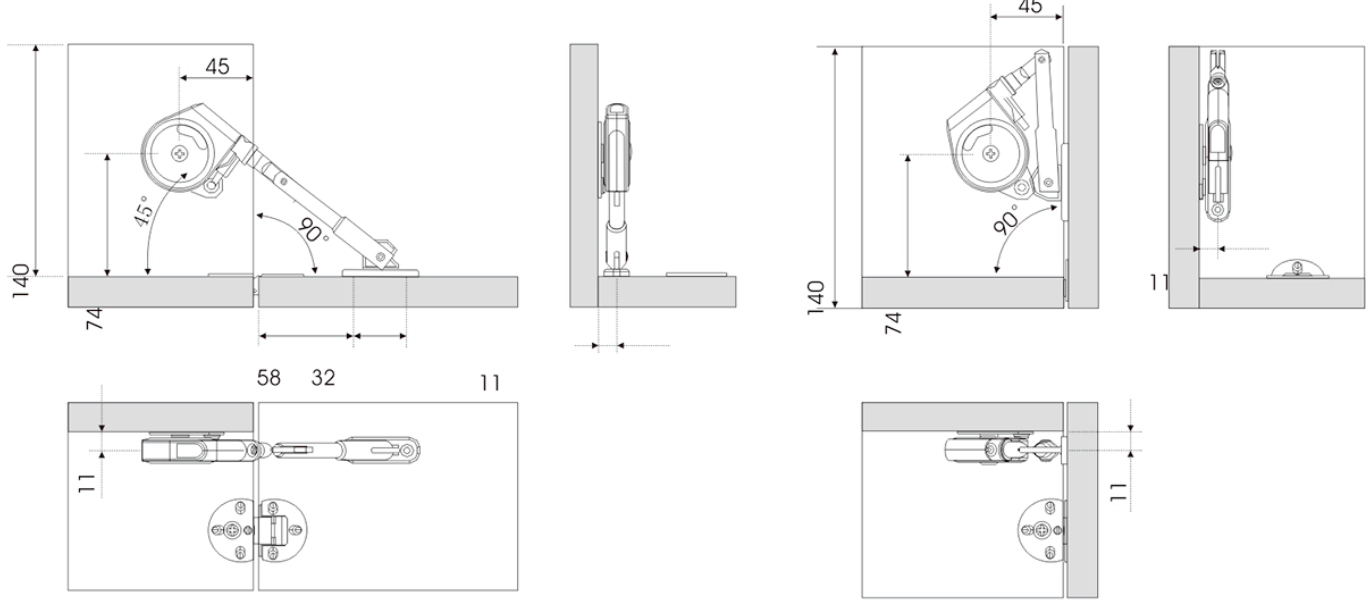


Features:
The door opens downward smoothly,
reducing impact and noise.
The product can be installed on
either the left or right side.

Range:
Single product torque: 5~12kgf·cm
Door weight(m)/2 x Door weight x9.8=0.49~1.18N
(5~12 kgf·cm)



Installation Dimensions(mm)





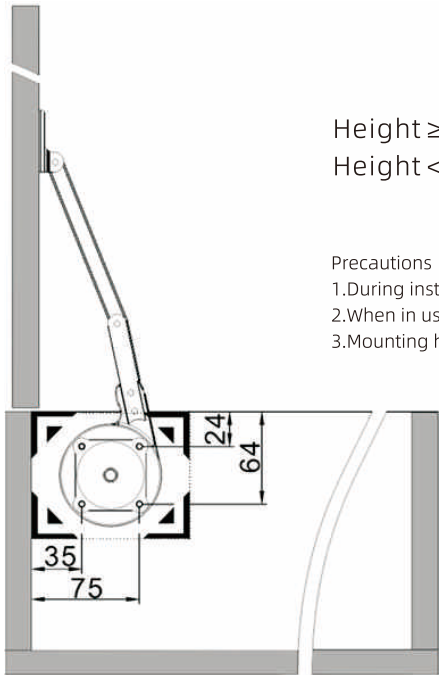
- Advantages:
- 1. One size fits all door panel dimensions.
 - 2. Installation is very simple: Align the template card with the side panel edge, mark hole positions, and secure with screws.
 - 3. Full-range damping mechanism minimizes impact force and noise when closing doors, ensuring safe, slow, and silent closure.



Door Panel Specification Chart

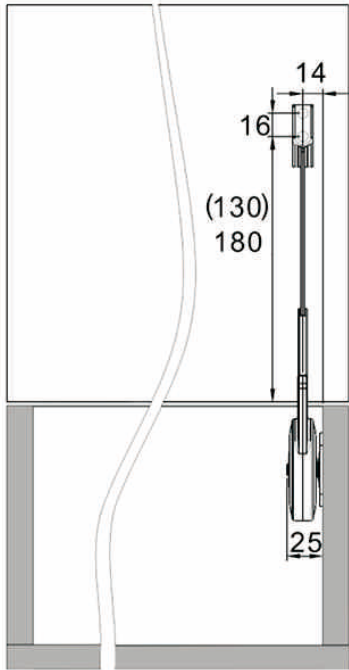
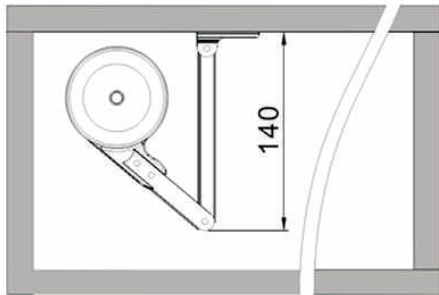
Door Panel Height \ Door Panel Width	400<W<600	600<W<800	800<W<1000	1000<W<1100	1000<W<1200
350 < H < 450	1 pcs	1 pcs	1 pcs	2 pcs	2 pcs
450 < H < 550	1 pcs	1 pcs	2 pcs	2 pcs	2 pcs
550 < H < 600	1 pcs	2 pcs	2 pcs	2 pcs	2 pcs

Note: This chart uses 18mm thick panels as samples.



Height ≥ 450mm: Install at 130mm position
Height < 450mm: Install at 180mm position

- Precautions
- 1. During installation, ensure door opening angle ≥ 90°
 - 2. When in use, avoid using excessive force to close doors
 - 3. Mounting hole template on the back is for reference only



- Advantages:
- 1. Universal for vanities/tatami beds: Fits all doors ≤ 550mm height and ≤ 1200mm width – one model suffices.
 - 2. Installation is very simple: Align the template card with the side panel edge, mark hole positions, and secure with screws.
 - 3. Full-range damping mechanism minimizes impact force and noise when closing doors, ensuring safe, slow, and silent closure.

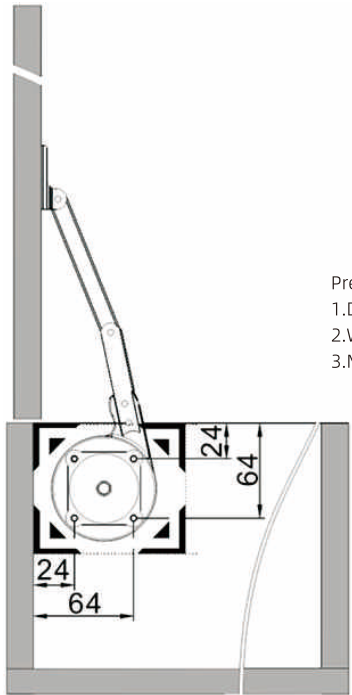
Note: Cabinet depth must be > 100mm



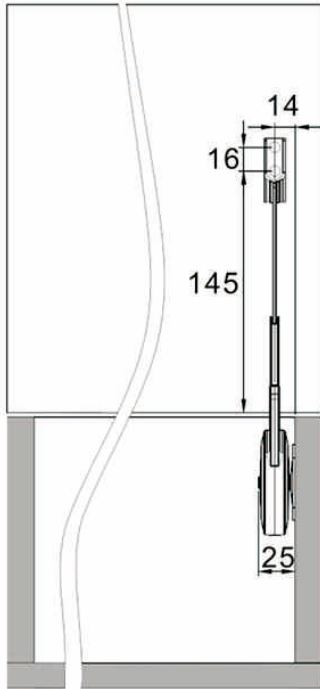
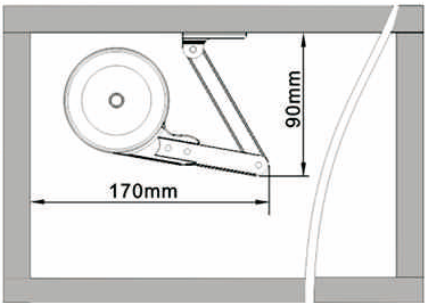
Door Panel Specification Chart

Door Panel Height \ Door Panel Width	400<W<600	600<W<800	800<W<1000	1000<W<1100	1000<W<1200
350 < H < 450	1 pcs	1 pcs	2 pcs	2 pcs	2 pcs
450 < H < 550	1 pcs	2 pcs	2 pcs	2 pcs	2 pcs

Note: This chart uses 18mm thick panels as samples.



- Precautions
- 1. During installation, ensure door opening angle ≥ 90°
 - 2. When in use, avoid using excessive force to close doors
 - 3. Mounting hole template on the back is for reference only



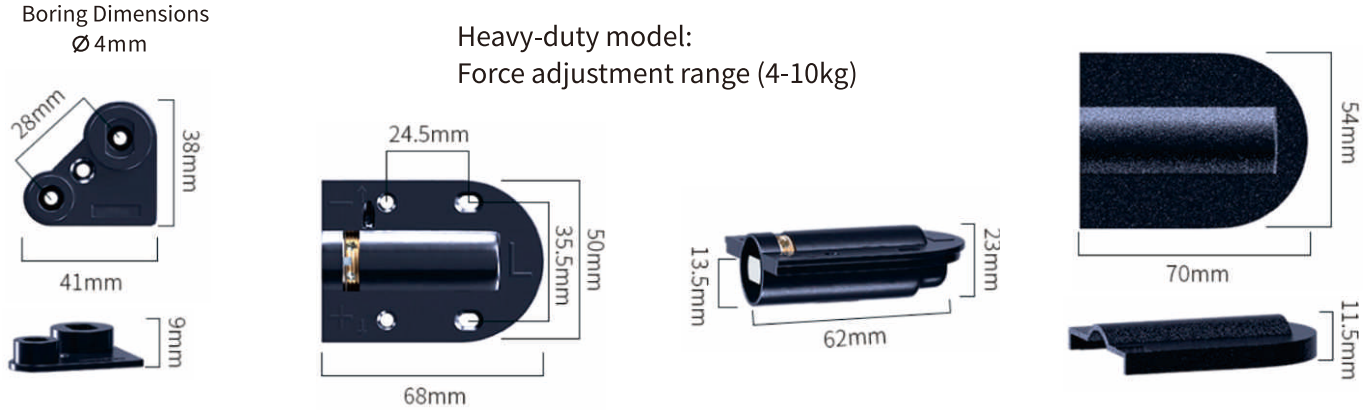
AXH-01 Downward-Buffering Hinge



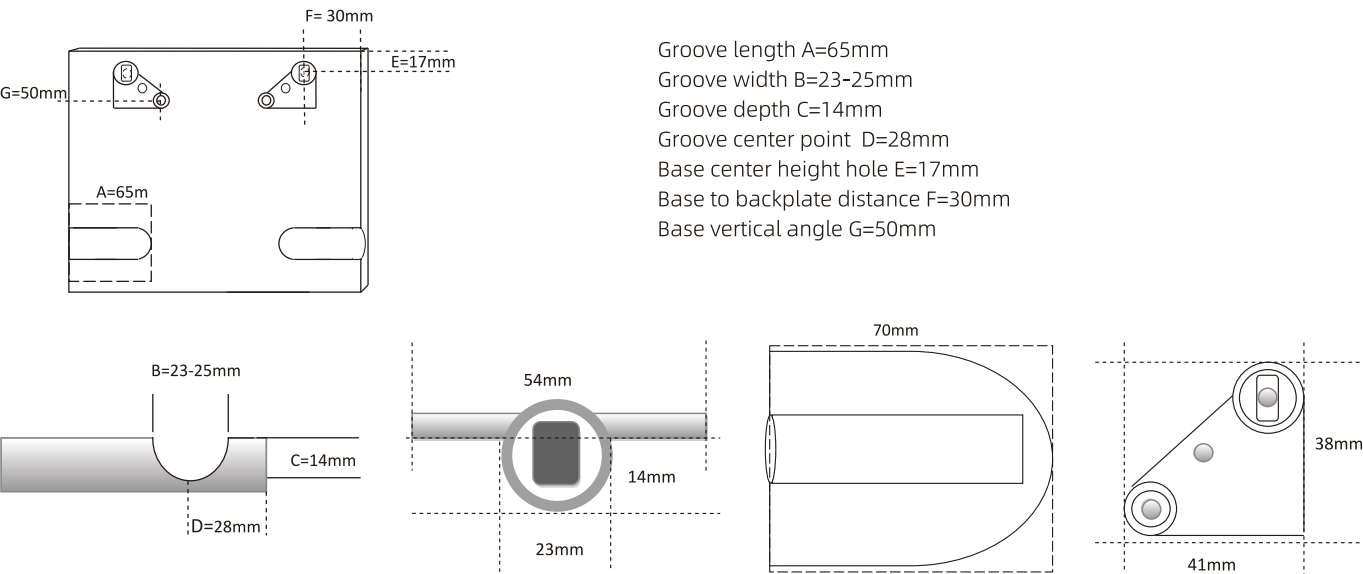
Applicable Panel: ≥18mm thickness
Max Torque: 4-10N·m (Heavy-duty adjustable)
Grooving Method: Front-edge grooving
Material: Zinc alloy + ABS
Packaging: Set (50 pcs/set)

This product is suitable for drop-down panel furniture such as vanity desks and writing desks, Closing speed is freely adjustable, Adjustable without disassembly, Slowly descends during closing, Prevents direct vertical closure, Ensures anti-pinch safety.

Product Size Diagram(mm)



Installation Dimensions(mm)



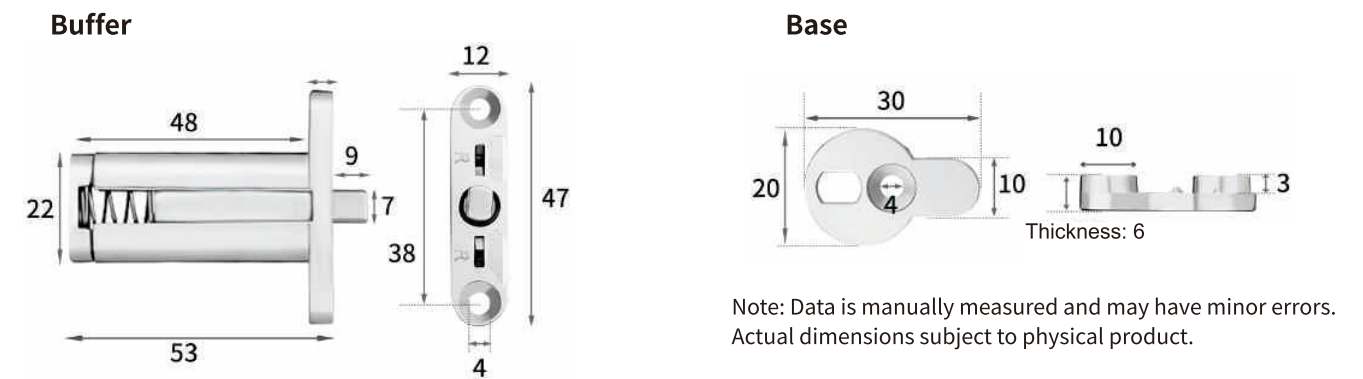
AXH-02 Concealed Quick-Install Buffer



Applicable Panel: ≥18mm thickness
Max Torque: 1-8N·m (Heavy-duty adjustable)
Grooving Method: Side-edge milling
Material: Zinc alloy
Packaging: Set (100 pcs/set)

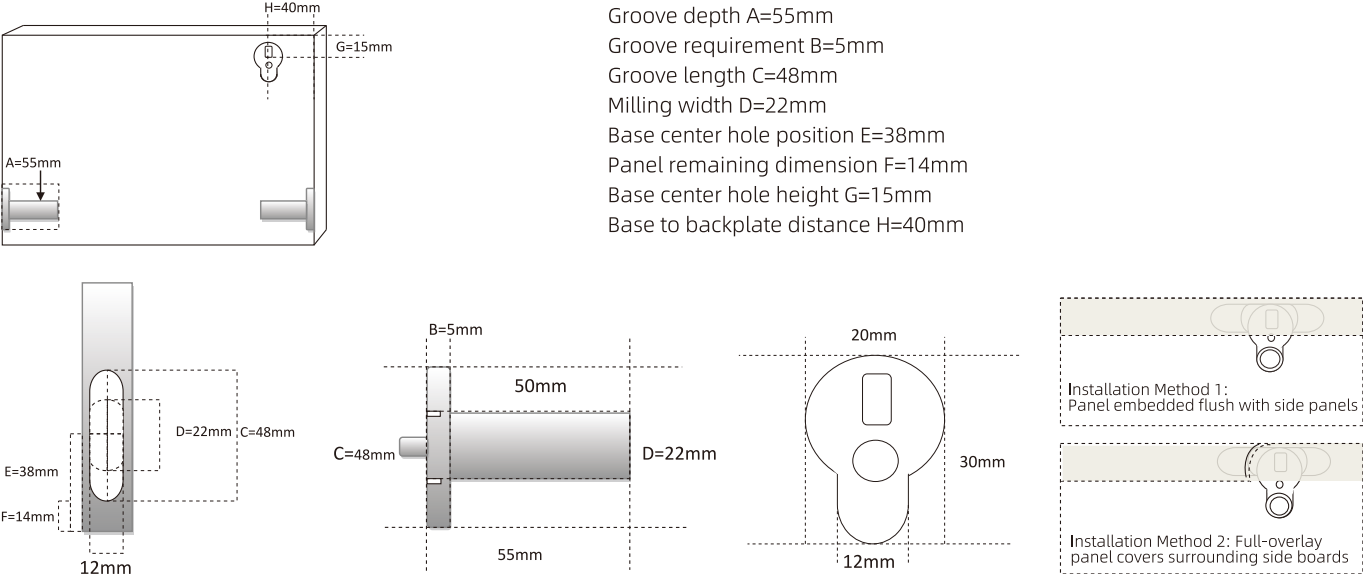
This product is suitable for drop-down panel furniture such as vanity desks and writing desks, Achieves concealed hardware installation, Clean and aesthetic appearance. Slowly descends during closing, Prevents direct vertical closure, Anti-pinch safety function, etc.

Product Size Diagram(mm)



Note: Data is manually measured and may have minor errors.
Actual dimensions subject to physical product.

Installation Dimensions(mm)

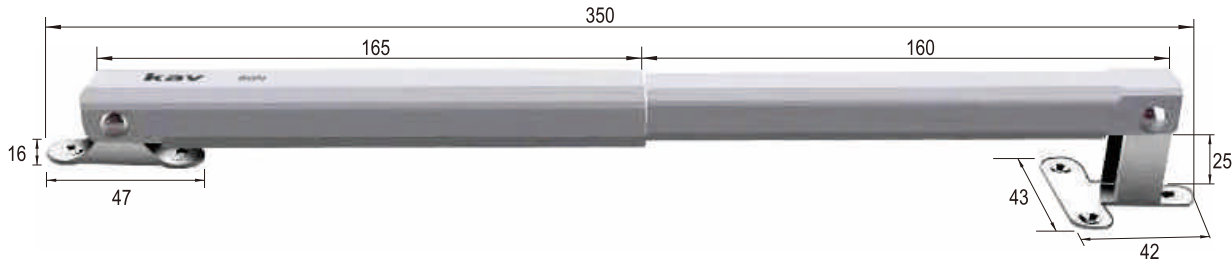




- Advantages:
- 1. One size fits all door panels
 - 2. Simple installation: Align the arrow on the support back with the panel edge, then secure with screws directly
 - 3. Full-range damping mechanism allows smooth opening while minimizing impact force and noise during closing, ensuring safe/slow/silent closure

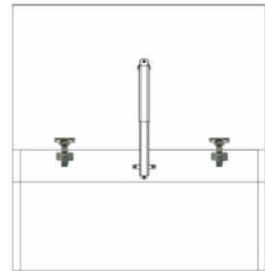
Material: Steel + ABS
Opening Angle: approx. 95°
Applicable Door Height: 320-650mm
Applicable Width: 300-130mm
Packaging: 60 pcs/carton
Important: Door panel height must not be less than 320mm

Product Size (mm)

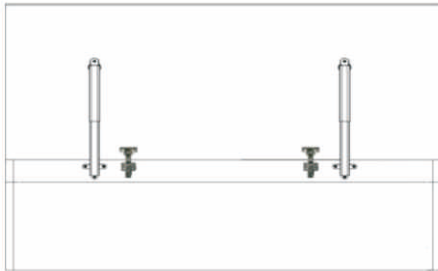


Mounting Schematic

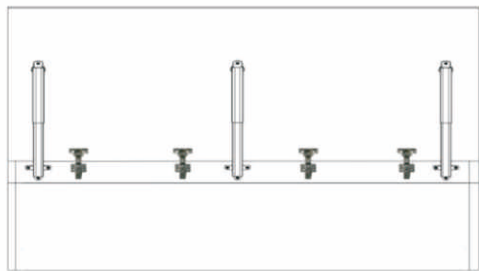
Mounting 1 Unit Schematic



Mounting 2 Units Schematic



Mounting 3 Units Schematic



Cabinet Sizing Reference Chart



Width(mm) Hight(mm)	300<W≤700	700<W≤800	800<W≤900	900<W≤1100	1100<W≤1300
320<W≤350	1 Unit 80N	1 Unit 80N	1 Unit 80N	1 Unit 80N	2 Units 80N
350<W≤400	1 Unit 80N	1 Unit 80N	1 Unit 80N	1 Unit 80N	2 Units 80N
400<W≤450	1 Unit 80N	1 Unit 80N	1 Unit 80N	2 Units 80N	2 Units 80N
450<W≤500	1 Unit 80N	1 Unit 80N	1 Unit 80N	2 Units 80N	2 Units 80N
500<W≤550	1 Unit 80N	2 Units 80N	2 Units 80N	3 Units 80N	3 Units 80N
550<W≤600	2 Units 80N	2 Units 80N	3 Units 80N	3 Units 80N	3 Units 80N